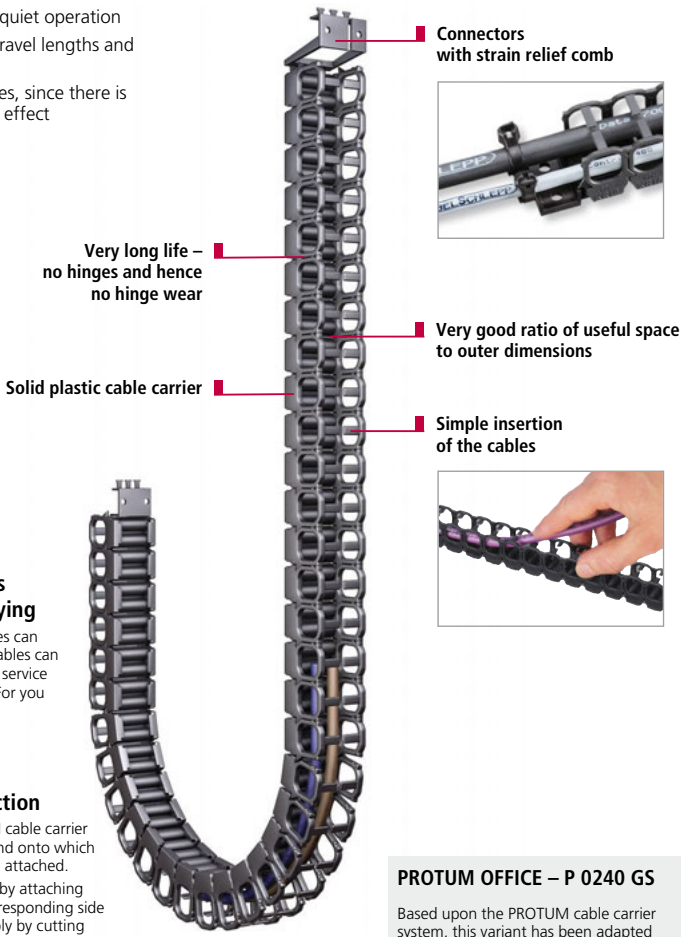




PROTUM

Small, light cable carrier for unsupported applications

- Low vibration and quiet operation
- Optimal for short travel lengths and high travel speeds
- Gentle on the cables, since there is almost no polygon effect



Connectors with strain relief comb



Very long life – no hinges and hence no hinge wear

Very good ratio of useful space to outer dimensions

Solid plastic cable carrier

Simple insertion of the cables

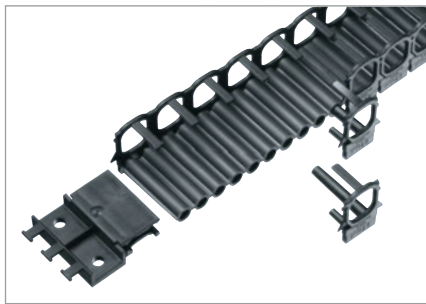


Less expense – lower costs thanks to simple cable laying

Even pre-assembled cables can simply be inserted. The cables can easily be changed during service and maintenance work. For you this means lower costs.

The basic construction

The basis of the PROTUM cable carrier system is an extruded band onto which lightweight side parts are attached. It can easily be extended by attaching additional bands and corresponding side parts and shortened simply by cutting through the band with a knife.



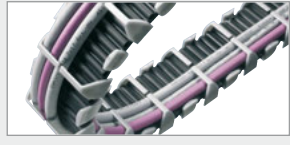
Subject to change.

PROTUM OFFICE – P 0240 GS

Based upon the PROTUM cable carrier system, this variant has been adapted for use in office areas.

The inner width and the possibility of double occupancy provide sufficient space for cables in office areas, i.e. for telecommunications, energy and data cables.

The link-free construction also serves as a design feature, with silver-grey, elegant-looking side walls.



Inside heights



Inside widths



kabelschlepp.de

Font: +49 2762 4003-0

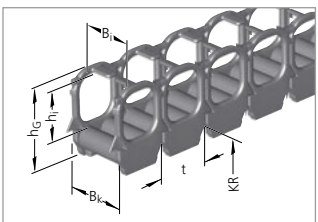
OnlineEngineer.de
The online engineer for cable carrier configuration

Types P 0160 and P 0240

Inside heights



Inside widths



Dimensions and intrinsic chain weight

Type	hi	hG	Inside widths Bi			Bk	For cable-Ø
			Intrinsic chain weight				
P 0160	15	25	15	20	30	Bi + 4	10
			0.14	0.16	0.21		
P 0240	20	31	20	30	40	Bi + 5	15
			0.18	0.22	0.27		

Dimensions in mm/Weights in kg/m

kabelschlepp.de

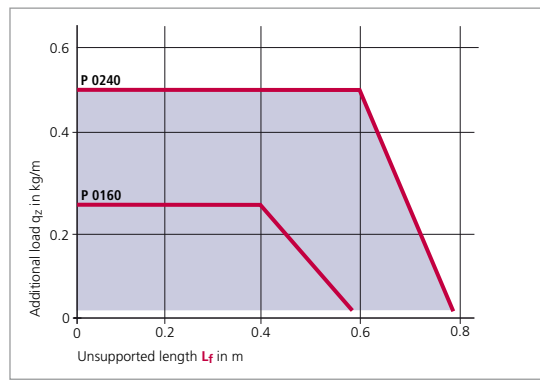
Bend radius and pitch

Type	Bend radii KR mm			
P 0160	18	28	38	48
P 0240	27	42	57	72

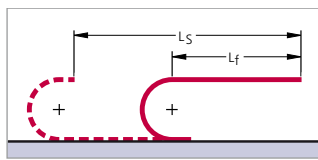
Pitch:
P 0160: t = 16 mm
P 0240: t = 24 mm

Load diagram

for unsupported length L_f depending on the additional load



Unsupported length L_f



In the case of longer travel lengths, sag of the cable carriers is technically permissible depending on the application. We are at your service to advise on these applications.

Fon: +49 2762 4003-0

Use our free project planning service.

Example of ordering

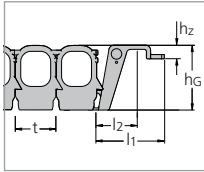
Cable carrier
P 0240 - **010** - **30** - **42** - **380**
 Type Design* Inside width B_i in mm Bend radius KR in mm Chain length L_k in mm (without connection)
 Connection **FA/MA**
 Connection Fixed point/Driver

* Design 010 (simple insertion of the cables)

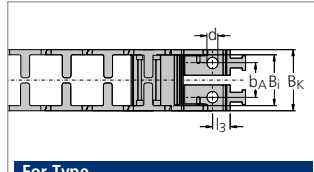
Types P 0160 and P 0240

Plastic connectors with integrated strain relief

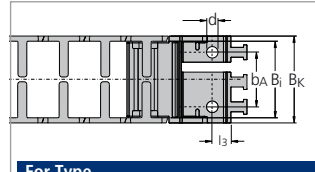
Connection dimensions – connection on the outside



The dimensions of the fixed point and driver connections are identical.



For Type
P 0160: $B_i = 15, 20$ P 0240: $B_i = 20$



For Type
P 0160: $B_i = 30$ P 0240: $B_i = 30, 40$

Inside heights

15
—
20

Inside widths

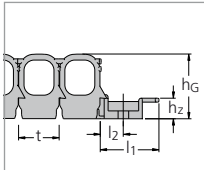
15
—
40

Type	B_i	B_k	b_A	d	l_1	l_2	l_3	h_z	h_G
P 0160	15	$B_i + 4$	11	4.2	33.6	19.5	7.5	6.5	25
	20		14						
	30		22						
P 0240	20	$B_i + 5$	14	4.2	33.6	19.5	7.5	6.5	31
	30		22						
	40		32						

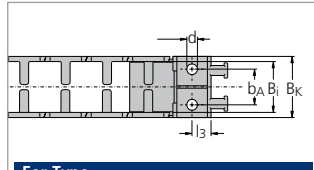
Plastic connecting elements with strain relief combs

Dimensions in mm

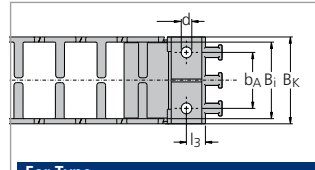
Connection dimensions – connection on the inside



The dimensions of the fixed point and driver connections are identical.



For Type
P 0160: $B_i = 15, 20$ P 0240: $B_i = 20$



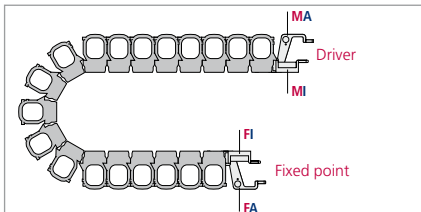
For Type
P 0160: $B_i = 30$ P 0240: $B_i = 30, 40$

Type	B_i	B_k	b_A	d	l_1	l_2	l_3	h_z	h_G
P 0160	15	$B_i + 4$	11	4.2	23	7.5	7.5	8	25
	20		14						
	30		22						
P 0240	20	$B_i + 5$	11	4.2	23	7.5	7.5	8	31
	30		22						
	40		32						

Plastic connecting elements with strain relief combs

Dimensions in mm

Connection variants



Connection point

- M** – Driver
- F** – Fixed point

Connection type

- I** – Threaded joint, inside
- A** – Threaded joint, outside

PROTUM OFFICE – P 0240 GS

Based on the PROTUM cable carrier system, this variant has been adapted for use in office areas. The inside width and the possibility of double occupancy provide sufficient space for cables in office areas, i.e. for telecommunications, energy and data cables. The link-free construction also serves as a design feature, with silver-grey, elegant-looking side walls.



Inside heights



Inside widths

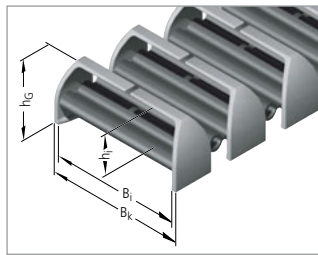
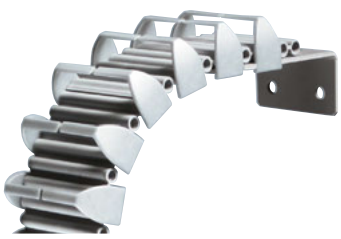


kabelschlepp.de

Dimensions and intrinsic chain weight

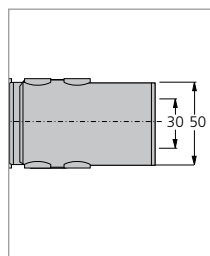
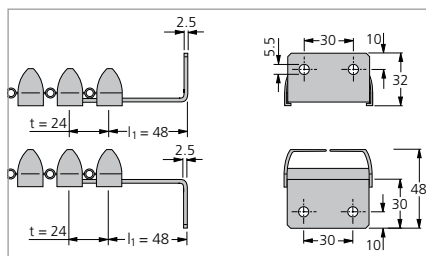
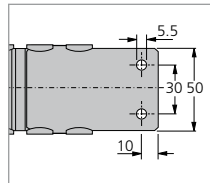
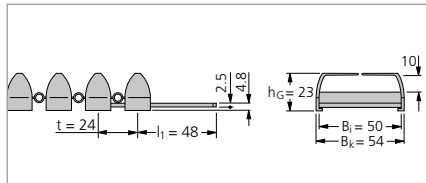
Type	h_i	h_G	B_i	B_k	For cable-Ø
P 0240 GS	10	23	50	54	3 – 9

Dimensions in mm



Fon: +49 2762 4003-0

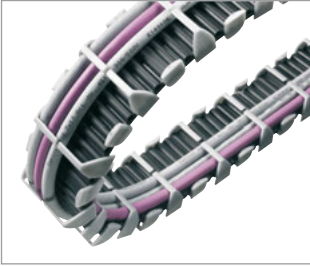
Connectors



Use our free project planning service.

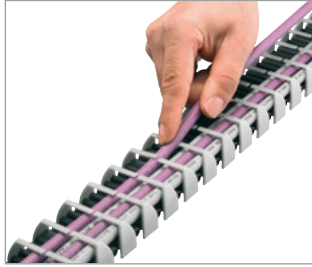
PROTUM OFFICE – P 0240 GS

Laying on both sides



■ Where more of space is needed, the take-up capacity can be doubled by laying the cables on both sides. In this case every second side-part is simply attached the other way round.

Fast laying



■ Simple insertion of the cables.

Application examples



■ Photographs: Haworth Büroeinrichtungen GmbH

PROTUM
OFFICE

Selection

BASIC
LINE

BASIC
LINEPLUS

Inside
heights



Inside
widths



kabelschlepp.de

Font:
+49 2762 4003-0

OnlineEngineer.de
The online engineer
Cable Center Configuration