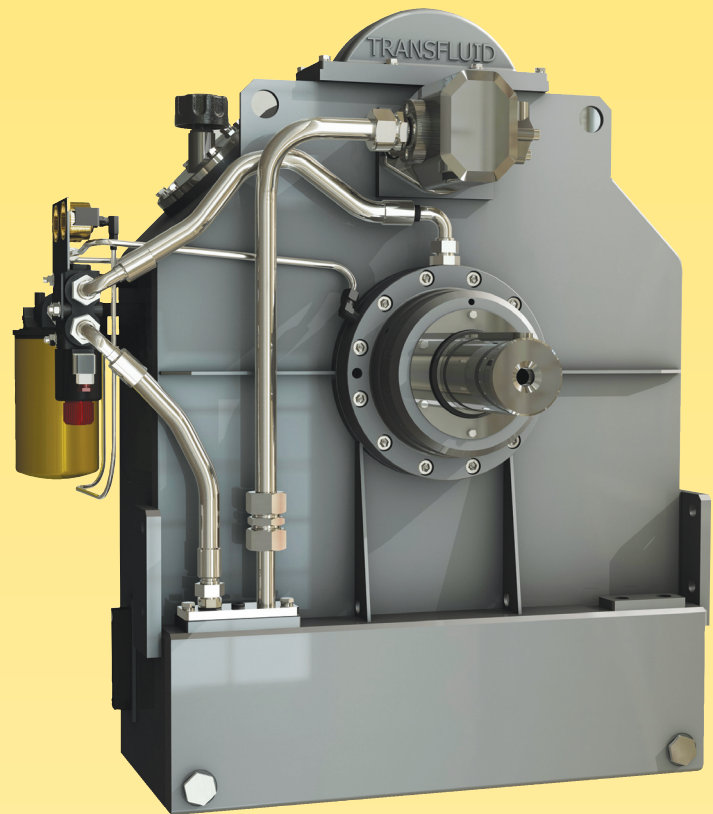


TRANSFLUID



# TRANSFLUID

**trasmissioni industriali**



**KPTO**  
DRAIN-TYPE FLUID COUPLING  
for internal combustion engines

**drive with us**

# FLUID COUPLINGS KPTO SERIES for internal combustion engines

## DESCRIPTION

The **KPTO** is a variable fill fluid coupling enclosed into a casing connected to the Diesel engine by means of a SAE housing. The **KPTO** has been designed to meet the market requirements for a unit combining the technical features of a conventional Power Take Off with the performances of a fluid coupling.

The **KPTO** has an integral feeding pump driven by the Diesel engine. A remote electrically operated ON-OFF solenoid valve allows the fluid coupling circuit to be fed when it is turned ON, while a rapid oil drain through calibrated orifices located on the periphery of the fluid coupling occurs when it is turned OFF.

A forced bearing lubrication is always assured continuously.

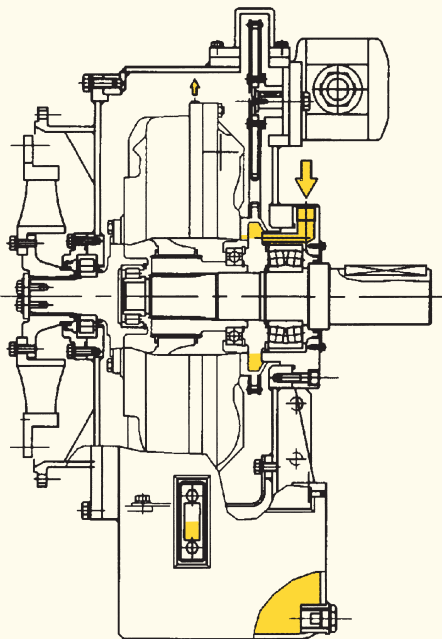
The **KPTO** range is suitable for powers up to 1000 kW.

The engine flywheel is connected to the **KPTO** input by a highly torsionally flexible coupling. The output shaft can be connected to the driven machine by an elastic coupling, a cardan shaft or a pulley.

Standard accessories: oil feeding pump, oil filter with pressure and temperature gauges, ON-OFF electric valve, oil temperature and pressure switches, oil level indicators.

Optionals: water/oil heat exchanger or radiator, quick release valves, output pulley, elastic or superelastic alignment couplings.

## WORKING SCHEME



	ENGINE POWER (kW)				
	15	19	21	24	27
1000	–	70	100	150	220
1200	–	90	150	220	300
1500	65	160	230	315	570
1800	85	275	400	545	1000
2200	155	330	470	650	–
2600	200	400	–	–	–

## FEATURES

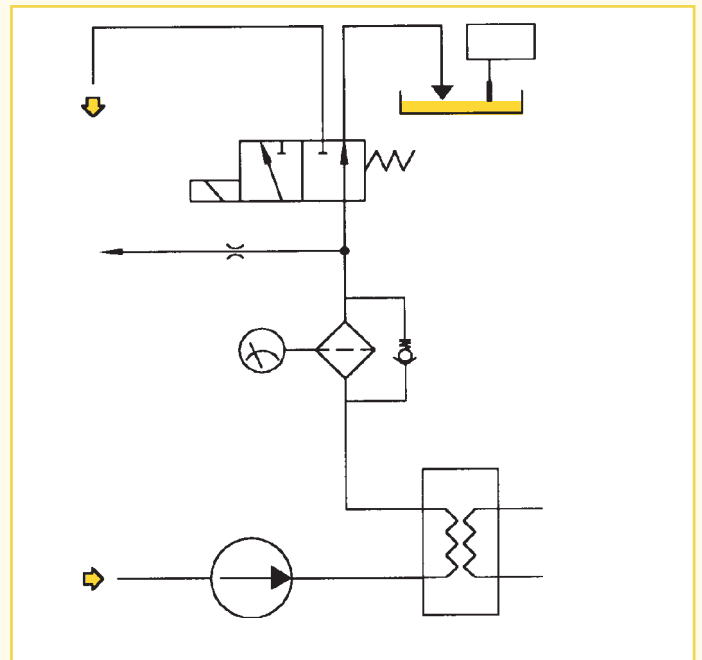
The **KPTO** drain type fluid coupling allows to disconnect the engine from the load granting the following advantages:

- unloaded engine warm up
- smooth start up, not belt slip
- shock and overload protection
- torsional vibration dampening
- high radial load capacity
- remote control by electric valve
- load positioning
- inexpensive and easy maintenance due to external mounting of the main accessories like oil filter, feeding pump, control valve
- longer life thanks to no friction linings to wear out.

## APPLICATIONS

- mills, crushers, wood chippers, grinders, shredders
- belt conveyors
- reciprocating and centrifugal pumps, compressors
- marine propulsion, boat thrusters
- generators
- fans and blowers.

## HYDRAULIC CIRCUIT



To calculate oil and water flow into heat exchanger, use following formulas:

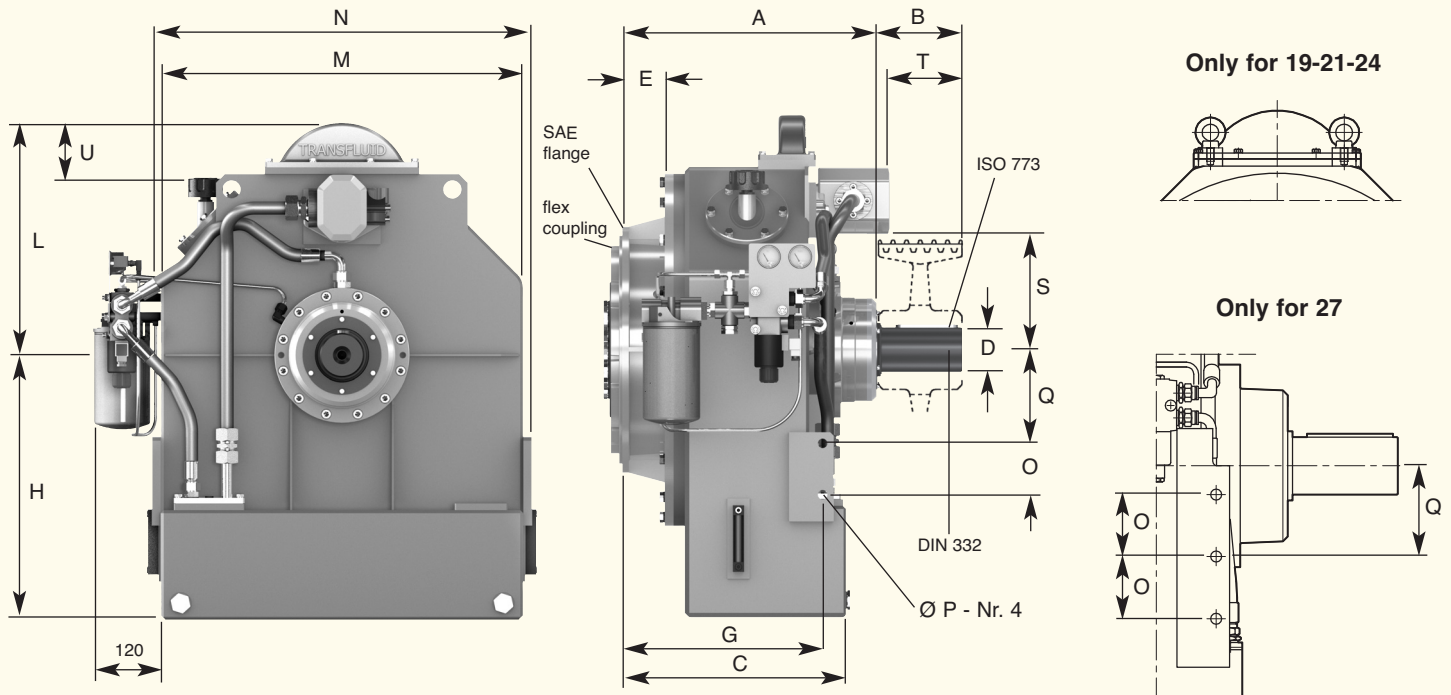
$$\text{water (lt/min)} = \frac{\text{power (kW)}}{50} \times 8$$

$$\text{oil (lt/min)} = \frac{\text{power (kW)}}{50} \times 10$$

Above formulas are based upon following data:

Exchanger oil inlet = 110°C      Exchanger oil outlet = 100°C  
Exchanger water inlet = 85°C      Exchanger water outlet = 90°C

Engine cooling water can be used.



Size Dimensions

	A	B	C	D	E	G	H	L	M	N
15	414	130	430	70	61	362	440	395	560	590
19	455	150	450	80	98	406	500	420	670	700
21	517	180	512	100	105	458	600	480	820	860
24	583	180	502	100	95	448	600	526	820	860
27	710-726*	220	605-621*	120	123-139*	550-566*	675	445	890	940

Size Dimensions

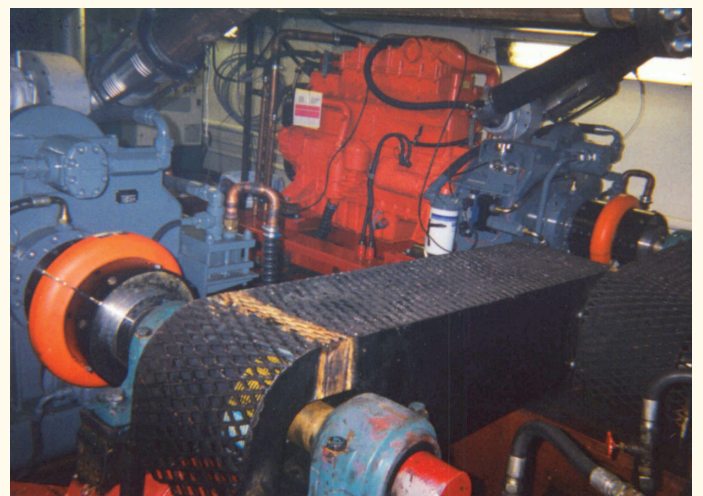
	O	P	Q	S	T	U	SAE housing	SAE flywheel	Weight (kg) w/o oil	Oil (lt)
15	65	17	135	205	66.5	115	2-1	11.5-14	250	28
19	80	19	155	228	68	85	1	14	310	35
21	115	21	210	260	87	115	1-0	14-18	475	65
24	115	21	210	260	163	70	1-0	14-18	550	65
27	130	23	190	-	-	-	0-00	18-21*	800	87

• Dimensions for flywheel 21".  
For admissible radial loads apply Transfluid.

Dimensions can be changed without notice



CRUSHER



MARINE PROPULSION

## EUROPE

### AUSTRIA

ASC GMBH  
4470 Enns

**AUSTRIA (Diesel appl.)**  
ESCO ANTRIEBSTECHNIK GMBH  
53831 Troisdorf

**BELGIUM**  
ESCOPOWER N.V.  
1480 Saintes

**CZECH REPUBLIC**  
TESPO ENGINEERING s.r.o.  
602 00 Brno

**CZECH REPUBLIC (Diesel appl.)**  
ESCO ANTRIEBSTECHNIK GMBH  
53831 Troisdorf

**DENMARK (Electric appl.)**  
JENS S. TRANSMISSIONER A/S  
DK 2635 ISHØJ

**ENGLAND & IRELAND**  
MARINE AND INDUSTRIAL TRANS. LTD.  
Queenborough Kent me11 5ee

**FINLAND**  
OY JENS S. AB  
02271 Espoo

**FINLAND (Diesel Applications)**  
TRANS-AUTO AB  
151 48 Södertälje

**FRANCE**  
TRANSFLUID FRANCE s.a.r.l.  
38500 Voiron  
Tel.: +33.9.75635310  
Fax: +33.4.26007959  
tffrance@transfluid.it

**GERMANY**  
ESCO ANTRIEBSTECHNIK GMBH  
53831 Troisdorf

**HUNGARY**  
AGISYS  
2045 Torokbalint

**NETHERLAND**  
AANDRIJF TECHNISCH BURO BV  
5902 RB Venlo

**NETHERLAND (Diesel appl.)**  
ESCO AANDRIJVINGEN B.V.  
2404 HM Alphen a/d Rijn

**POLAND**  
SENOMA LTD  
PL40-153 Katowice

**PORTUGAL**  
REDVARIO LDA  
2735-469 Cacem

**RUSSIAN FEDERATION**  
▲ TRANSFLUID OOO  
Moscow  
Tel.: +7.495.7782042  
Mob.: +7.926.8167357  
tfrussia@transfluid.it

**SLOVAKIA**  
ESCO ANTRIEBSTECHNIK GMBH  
53831 Troisdorf

**SLOVENIA**  
VIA INTERNATIONAL d.o.o.  
1241 Kamnik

▲ TRANSFLUID SUBSIDIARIES ◆ REPRESENTATIVE OFFICE 📍 SERVICE CENTER

**SPAIN**  
TECNOTRANS BONFIGLIOLI S.A.  
08040 Barcelona

**SWEDEN**  
JENS S. TRANSMISSIONER AB  
SE-601-19 Norrköping

**SWEDEN (Diesel appl.)**  
TRANS-AUTO  
SE 151-48 Södertälje

**TURKEY**  
REMAS  
81700 Tuzla Istanbul

## OCEANIA

**AUSTRALIA**  
PT ENGINEERED DRIVES  
Kingsgrove NSW 2208

▲ TRANSFLUID AUSTRALIA PTY LTD  
Smithfield NSW 2164  
Tel.: +61297572655  
Fax: +61297560181  
tfaustralia@transfluid.it

**NEW ZEALAND**  
TRANSFLUID AUSTRALIA PTY LTD  
Smithfield NSW 2164  
Tel.: +61297572655  
Fax: +61297560181  
tfaustralia@transfluid.it

## AMERICA

**ARGENTINA**  
ACOTEC S.A.  
Villa Adelina - Buenos Aires

◆ **BRAZIL**  
TRANSFLUID DO BRASIL  
05014-060 Sao Paulo SP  
Tel.: +55.11.48235308  
Fax: +55.11.48235308  
tfbrazil@transfluid.it

**WAD**  
31255-050 Belo Horizonte MG

**CHILE**  
SCEM LTDA  
Santiago Do Chile

**COLUMBIA**  
A.G.P. REPRESENTACIONES LTDA  
77158 Bogotá

**MEXICO**  
A.A.R.I., S.A. de C.V.  
11500 Mexico df

**PERU'**  
DEALER S.A.C.  
Cercado, Arequipa

**U.S.A.**  
KRAFT POWER CORP.  
Suwanee GA 30024

**U.S.A. & CANADA**  
▲ TRANSFLUID LLC  
Auburn, GA30011  
Tel.: +1.770-822-1777  
Fax: +1.770-822-1774  
tfusa@transfluid.it

## AFRICA

📍 **ALGERIA - CAMEROUN - GUINEA - MAROCCO - MAURITANIA - SENEGAL - TUNISIA**  
TRANSFLUID FRANCE s.a.r.l.  
38500 Voiron (France)  
Tel.: +33.9.75635310  
Fax: +33.4.26007959  
tffrance@transfluid.it

**EGYPT**  
INTERN.FOR TRADING & AGENCY (ITACO)  
Nasr City (Cairo)

📍 **SOUTH AFRICA-SUB SAHARAN COUNTRIES**  
BMG BEARING MAN GROUP  
Johannesburg

## ASIA

**ASIA South East**  
ATRAM TRANSMISSION PTE LTD  
Singapore 608 579

**CHINA**  
▲ TRANSFLUID BEIJING TRADE CO. LTD  
Beijing  
Tel.: 0086.10.60442301-2  
Fax: 0086.10.60442305  
tbtcinfo@sina.com

**INDIA**  
▲ PROTOS ENGINEERING CO. PRIVATE LTD  
600002 Tamilnadu Chennai

**INDONESIA**  
PT. HIMALAYA EVEREST JAYA  
Barat Jakarta 11710

**IRAN**  
LEBON CO.  
Tehran 15166

**ISRAEL**  
ELRAM ENGINEERING &  
ADVANCED TECHNOLOGIES 1992 LTD  
Emek Hefer 38800

**JAPAN**  
ASAHI SEIKO CO. LTD.  
Osaka 593

**KOREA**  
KIWON CORP.  
Pusan - South Korea

**PHILIPPINES**  
📍 TRANSFLUID AUSTRALIA PTY LTD  
Smithfield NSW 2164  
Tel.: +61297572655  
Fax: +61297560181  
tfaustralia@transfluid.it

📍 **TAIWAN**  
FAIR POWER TECHNOLOGIES CO.LTD  
105 Taipei

📍 **THAILAND**  
SYSTEM CORP. LTD.  
Bangkok 10140

**UAE - SAUDI ARABIA - KUWAIT - OMAN  
BAHRAIN - YEMEN - QATAR**  
NICO INTERNATIONAL U.A.E.  
Dubai

LOCAL DISTRIBUTOR

Global web site: [www.transfluid.eu](http://www.transfluid.eu)

E-commerce web site: [www.buy-transfluid.com](http://www.buy-transfluid.com)